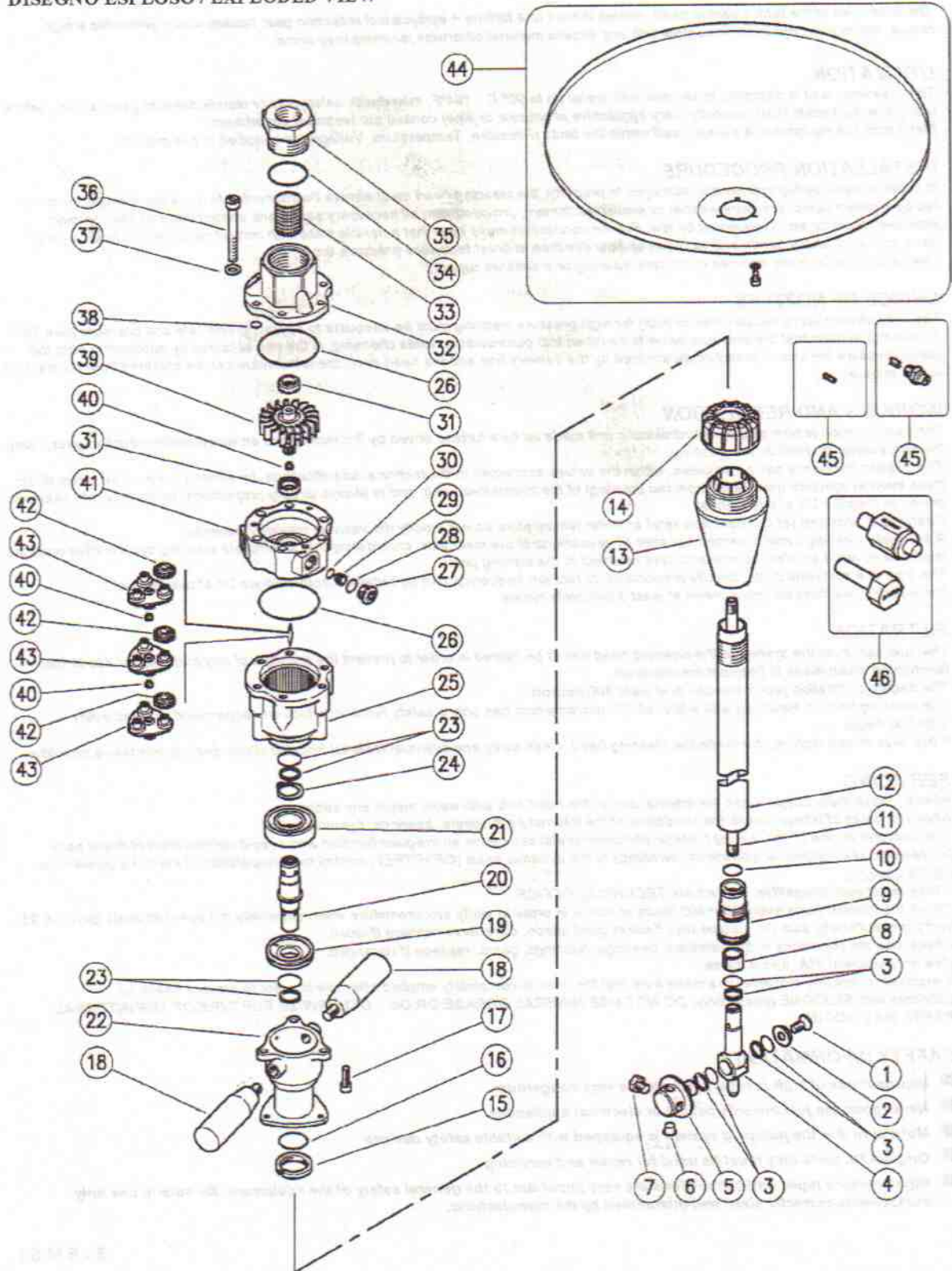



DISEGNO ESPLOSO / EXPLODED VIEW



25.4600.20 - 25.4600.24

Pos	Codice/P.N.	Descrizione	Description	Qta	
1	16.1954.12	Vite M8 x 12 mm inox	Sst M8 x 12 mm screw	1	10
2	80.0015.51	Rosetta sv. 8,5x22mm inox	Sst washer	1	3
3	*10.2030.00	An.guarnizione	Seal	3	4
4	80.0005.52	Piantale M10 inox	Sst housing M10	1	1
5	80.0014.51	Pignone inox z.57/1/8 (25.4600.20)	Z=57 M8 1/8 gear	1	1
5	80.0016.51	Pignone z.57 -M4 (25.4600.24)	Sst gear z.57-M4	1	1
6	15.3710.18	Tappo pl. 1/8 (25.4600.20)	1/8" plas plug	2	4
6	15.3704.00	Tappo pl.M4 (25.4600.24)	M4 pl. plug	2	4
7	15.3711.18	Tappo inox 1/8 Npt (25.4600.20)	Sst 1/8 Npt plug	2	4
7	16.1830.00	Vite M 4 inox (25.4600.24)	Sst M 4 screw	2	25
8	#80.0009.85	Boccola Turcite	Pushing	1	3
9	80.0007.51	Pignone 34-denti inox	Z:34 gear	1	1
10	*10.3184.10	An.or 2,62 x 18,72 mm vit.	O-ring 2,62 x 18,72 mm Vit.	1	25
11	80.0003.56	Tubo L.894mm M10x1 inox	Sst tube M10x L. 894	1	1
12	80.0052.56	Tubo M28x1mm -895 mm	Sst M28 -895mm tube	1	1
13	80.0021.84	Tappo conico D.70 mm	Tapered 70 mm plug	1	3
14	80.0316.84	Ghiera pl.G1 1/2	1 1/2 plast nut	1	10
15	80.0012.51	Ghiera M28x1 mm	Sst M28 mm nut	1	1
16	*10.3205.10	An. Or 2,62 x 26,64 mm Vi 70.	O ring 2,62x26,64 mm Viton	1	10
17	16.1896.20	Vite Tcei M6x20mm inox	Sst M6x20 screw	3	25
18	13.0600.00	Manopola M10x15	Kriob Stator M10x15	2	1
19	80.0233.51	Anello	Sst ring	1	1
20	80.0232.51	Albero	Sst piston	1	1
21	#11.4420.47	Cuscinetto 20 mm inox	Sst ball bearing 20 mm	1	1
22	80.0231.52	Manicotto inox	Sst ouising	1	1
23	*10.2030.18	Anello guarnizione	Seal	2	5
24	#10.1020.05	An.el. esterno D.20mm inox	Sst elastic ring 20mm	1	10
25	80.0207.52	Corona inox	Sst gear	1	1
26	*10.3080.58	An. or 1,78 x 56,87 mm Vit	O-ring 1,78 x 56,87 mm Vit.	2	10
27	80.0219.51	Tappo M14x1mm inox	Sst plug M14	5	1
28	*10.3060.10	An.or 1,78 x 12,42 mm	O ring 1,78 x 12,42 mm	3	10
29	80.0221.51	Iniettore D.2mm inox	Sst 2 mm injector	3	3
29	80.0222.51	Iniettore D.3 mm	Sst 3mm injector	3	3
29	80.0223.51	Iniettore D.4 mm	Sst 4 mm injector	3	3
29	80.0224.51	Iniettore D.5mm	Sst 5 mm intern injector	3	3
30	*10.3003.00	An.or 1 x 8 mm	O-ring 1 x 8 mm	3	50
31	#80.0212.84	Boccola	Pushing	2	1
32	80.0201.52	Collettore inox	Sst manifold	1	1
33	28.0014.53	Rete 38 Mesh	Sst 38 Mesh net	1	10
34	*10.3208.36	An. or 2,62 x 36,17 mm vit	O-ring 2,62 x 36,17 mm vit	1	10
35	80.0217.51	Giunzione inox	Sst coupling	1	1
36	16.1955.60	Vite Tcei M8x60mm 1 inox	Sst Tcei M8x60mm screw	6	10
37	14.3573.00	Rosetta 8,4 mm	Sst 8,4 mm washer	6	25
38	*10.3109.98	An.or 2,4 x 8,3 mm	O ring 2,4 x 8,3 mm	3	25
39	80.0203.52	Girante inox	Sst impeller	1	1
40	#80.0213.84	Pasticca D.7mm	Spacer D.7mm	3	1
41	80.0202.52	Statore z.50 inox	Sst z.50 gear	1	1
42	#80.0204.38	Satellite z.10	z.10 gear	9	3
43	80.0205.00	Compl.portasatellite	Planet gear holder	3	1
44	80.0044.00	Comp.coperchio lam.M63	cover for M63	1	1
45	16.1363.45	Ugel inox+vent.1/8M 045	Sst nozzle+fan 1/8M 045	2-4	10
45	25.1091.51	Ugello 025-(1,1mm) M4 rossa	Sst 025(1,1mm) M4 nozzpink	2-4	10
45	25.1190.51	Ugello 02-1,0-M4 Verde chia.	Sst 02-1mm M4 nozzle green	2-4	10
45	25.1093.51	Ugel.035-1,3 mm M4 marrone	Sst 035-1,3mm M4 nozzle-brown	2-4	10
46	25.4631.24	Mi63 attrezz.montagg.guarn.pz.2	Mi63 seals replacem.tools 2pcs.	1	1
	*25.4608.24	Kit ric.Mi-63 pz.9x1	Mi 63 sealing kit 9x1 pcs.	1	
	#25.4630.24	Kit ripar.Mi 63-Mi 85 pz.6x1	Repair kit Mi63-Mi85 6x1 pcs.	1	